

WARRANTY CARD

1. KH Trading machines and tools are covered by 6/24 months warranty, starting on the date of purchase, as described in the Civil Code. (proof of purchase or invoice receipt must be enclosed with the warranty card when making a claim).
2. This warranty does not cover defects caused by unprofessional handling, machine overloads, not complying with instructions contained in this manual, using accessories that are not approved, unauthorized repair, regular wear and tear and damages occurred during transport. Further, this warranty does not cover parts and accessories such as the motor, carbon brushes, seals and hot-air operated parts and parts that need to be changed regularly.
3. If the repair is to be found as not covered by the warranty policy, all costs including the repair and shipping to and from the repair centre will be paid by the customer, according to valid price list. See www.
4. When making a claim, you must present the warranty card, showing the date of the purchase, the serial number of the machine, vendor stamp and signature of sales clerk, as well as the proof of purchase receipt.
5. Warranty claim shall be made at the vendor shop where you bought your machine or you may mail it to a service centre. The vendor is obligated to fill out the warranty card (date of sale, serial number, vendor stamp and signature). All these information must be filled in at the time of sale.
6. The warranty period will be extended for the period of time for which the machine has been in the service centre possession. If the repair or defect is not covered by the warranty policy, all costs including the repair and shipping will be paid by the owner of the machine / tool. We recommend sending the machine in its original packaging. Please, also enclose brief description of the defect with the packaging.
7. Before sending the machine for repair, clean it thoroughly. If the received machine is dirty, it may be rejected by the service shop or you may be charged a cleaning fee.

SERVICE

Logistic centre Klecany

Topolová 483

250 67 Klecany

Czech Republic

Claim department phone number: 266 190 156

T-mobile: 603 414 975

266 190 111

O2: 601 218 255

Fax:

260 190 100

Vodafone: 608 227 255

<http://www.KHnet.cz>

Email: servis@KHnet.cz

Product: SANDBLASTING BLOWER	
Type: 10121	Serial number (product series):
Date of manufacture:	Repair centre notes:
Date of sale, stamp, signature:	

Without the correctly filled warranty card or without proof of purchase receipt, including the product type (invoice, purchase receipt) no warranty claim will be processed.

uni-max

USER'S MANUAL

SANDBLASTING BLOWER



10121

Dear customer, thank you for purchasing sandblasting blower from KH Trading s.r.o.

Before first use, please read this manual carefully. It is your responsibility to study all instructions, necessary for safe use and operation and to understand all risks that may be involved during the use of power machines.

WARNING! Do not try to use this machine before reading this entire manual and before you know how to handle it. Keep this manual for future reference.

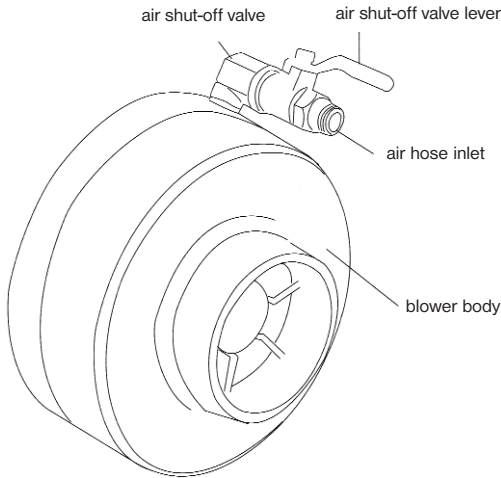
Pay special attention to safety instructions. Not complying with safety rules may cause injury to the operating person or to people standing by or it may cause damage to the machine and to the work piece.

Pay special attention to safety notes and safety labels on the machine. Never remove or damage them.

Please, write information such as the invoice number and the number of the sale receipt here in this box.

DESCRIPTION

- Machine has been designed for use in clean environment.
- High air speed protects the machine from dust contamination.
- High quality and durable plastic body offers strength and low weight.
- Powered only by air without the need for an engine.
- Suitable for all types of sandblasting booths.
- Adjustable air flow.
- Dynamically balanced, aluminium alloy propeller blades tilted forward, ensure maximum air flow.
- Specially designed for continuous use.
- Lubrication and maintenance free ball bearings.



REPAIR AND MAINTENANCE REPORT

Report and maintenance report:

DATE	REPAIR AND MAINTENANCE REPORT	SERVICE SHOP

TECHNICAL SPECIFICATION

Wheel diameter	.127 mm
Air consumption	> 180 l.min. ⁻¹
Connecting screw	.1/4"
Air suction inlet diameter	.35 mm
Air outlet diameter	.76 mm
Working pressure of air	more than 4.8 bar
Wheel speed	.6,000 rpm
Shaft diameter	.8 mm
Dimensions	.outer diameter 150 x 110 mm

The accuracy of instructions, graphs and information contained herein, depends on the printing date. Due to continuous product improvement, the manufacturer reserves the right to change technical parameters of the product, without prior customer notification.

SAFETY PRECAUTIONS

Symbols used throughout this manual



Warning!

This symbol informs you about the risk of personal injury, damage to the machine or other property.



Warning!

Risk of damage



General instructions

- Make sure you know your tool or machine and you are familiar with its operating procedure. Know the hazards that may occur, if not used correctly.
- If other person is using this machine risks make sure that he knows how to safely operate this equipment and that he is familiar with hazards and risk that may occur, if not used correctly.
- Pay special attention to safety notes and safety labels on the machine. Never remove or damage them. If the warning label becomes unreadable, please contact your vendor.
- Keep your working place clean.
- Never work in tight spaces or in purely lit rooms. Make sure the floor is solid and stable and that you can move around easily.
- Maintain your tools clean and in safe working conditions.
- Handles must be kept free of grease and dirt.
- Make sure no children, unauthorized persons or animals have access to your workshop.
- Never put your hands or legs inside the working area.

- Never leave your machine unattended during operation.
- Use only for purposes for which it has been designed.
- Use personal protective gear such as safety goggles, ear protection, respirator, safe working shoes etc.
- Do not overreach, use both hands.
- Never work under the influence of alcohol or other drugs.
- Do not use the machine if you feel dizzy or weak.
- Any modifications or improvements to the machine are strictly prohibited. If you discover any cracks or damages to the machine, do not use.
- Never perform any maintenance during operation.
- If you see any unusual sign or hear any strange sound, switch of machine immediately.
- Do not forget to remove all wrenches and screwdrivers from the machine after use.
- Before use, make sure all screws are tightened securely.
- Perform maintenance regularly. Before use make sure the machine is in good working conditions and without any damage.
- Use only original spare parts during repairs.
- Using non-original spare parts or other parts not approved by the manufacturer may cause damage to the machine or personal injury to the operating personnel.
- Use this machine only for work that could be handled by it. Do not overload tools, accessories or the machine. For large work volume use more powerful machine.
- Do not overload the machine. Measure the work load in such way, so it could be done with comfortable speed.
- Do not expose to extremely high temperature or direct sunlight.
- This machine is not designed for use in humid environments or under water.



Assembly

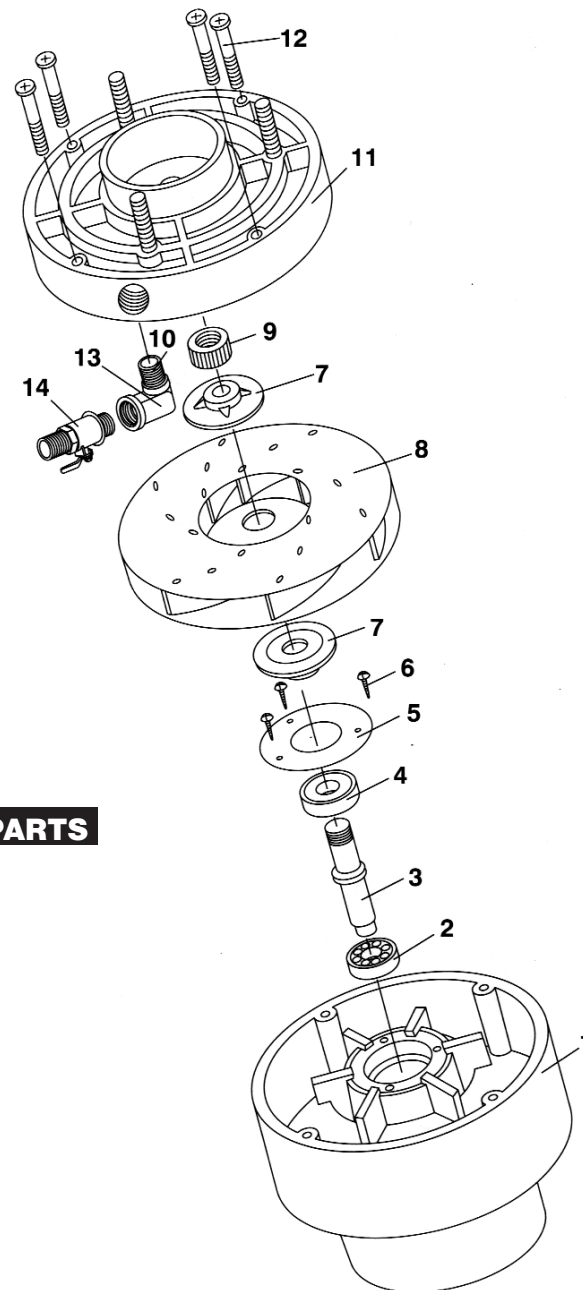
- Do not use the machine unless completely assembled.



Compressed air

- The supplied air must be dry and compressed according to the required specifications. The air flow supply must be sufficient. Higher supply pressure decreases the life expectancy of the machine and increases the possibility of injuries.
- The coupling that connects the machine with the supply apparatus must have the prescribed dimensions.
- Take extra caution if using the machine near water. Water may seriously damage your tools or machine. Do not forget to drain the condensed water from the pressure container. Also completely dry out the air supply hose.
- Make sure no dirt can enter the inside of the machine. Keep inlet openings clean.

ASSEMBLY DRAWING



MATERIAL AND MAIN PARTS

1. Main body
2. Bearing 626
3. Shaft
4. Bearing 628
5. Bearing cover
6. Safety screw cover
7. Propeller blade cover
8. Propeller wheel
9. Wheel nut
10. Air outlet coupling
11. Base platform
12. Cover safety screw
13. Elbow (1")
14. Spherical valve (1")

OPERATION

After you connect the air supply hose, the operation of the blower is easy. The blower is operated by adjusting the air flow, using the lever of the spherical valve. By adjusting the air flow you control the suction strength as well.

TROUBLESHOOTING

MAINTENANCE

- Keep your tools clean. Dirt from tools may enter the inner machine mechanism and cause damages to the tools or machine.
- Do not use aggressive cleaning solution or paint thinners to clean the machine.
- Clean plastic parts with soft cloth dipped in soapy water.

Detailed description of the use of this device is not included in this manual, because the manufacturer / distributor assumes that the user is experienced in similar type of work. Also according to the applicable law, this device is considered as a commonly sold and used tool. If the user is unfamiliar with the use of this device, we recommend finding out more information about using this device at the Department of work safety.

DISPOSAL

When the operational life of your device is over, dispose off it in accordance with valid rules and regulations. Your product is made of metal and plastic parts that may be recycled when separated.

1. Disassemble all parts.
2. Separate all parts according to the material they are made of (e.g. metals, rubber, plastics, etc.).
Take the separated parts to the recycling facility near you.

Information about the locations of recycling centres may be found at your local City office or throughout an Internet search.

CAUTION

If the machine breaks down, send it back to the vendor for quick repair.

Please, enclose brief description of the defect. That makes repair easier. If the machine is still covered by warranty, enclose the warranty card and proof of purchase receipt. After the warranty period expires, we repair your machine for a special price.

To prevent possible damages during shipping, packed the machine carefully or use the original packaging material. We are not liable for shipping damages due to incorrect packaging of your machine. If making a claim at the shipping company the level and method of packaging plays a major role during claim evaluation process.

Note: Pictures and contents in this manual may slightly differ from the actual product or accessories.

It is due to continuous improvement of our products. Such small differences have no effect on the product functionality.

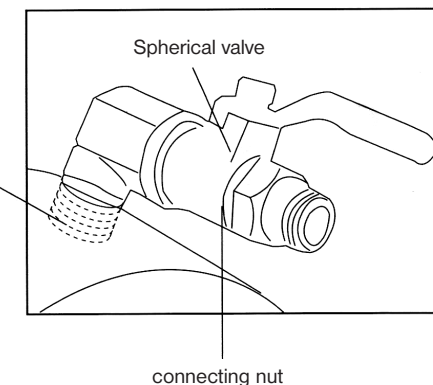
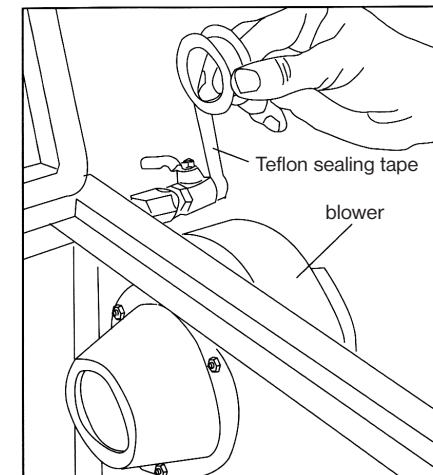
ASSEMBLY

PREPARATION

1. Wrap the connecting nut of the spherical valve with adhesive tape to avoid air leakage.
If you received the machine disassembled:
2. Place the connecting nut of the spherical valve in the threaded opening on the blower.
3. Tighten it securely.



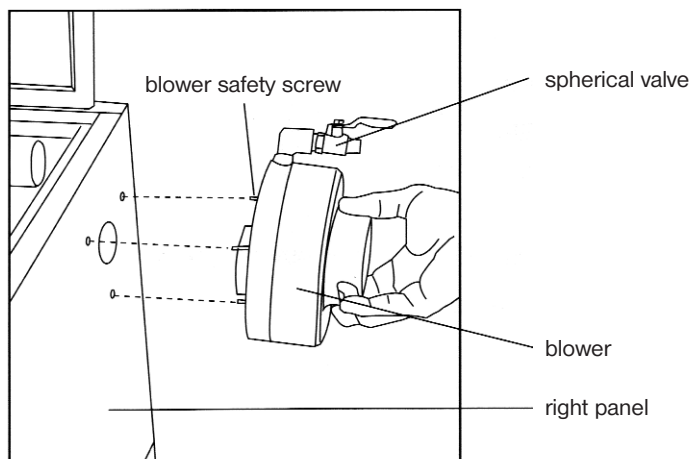
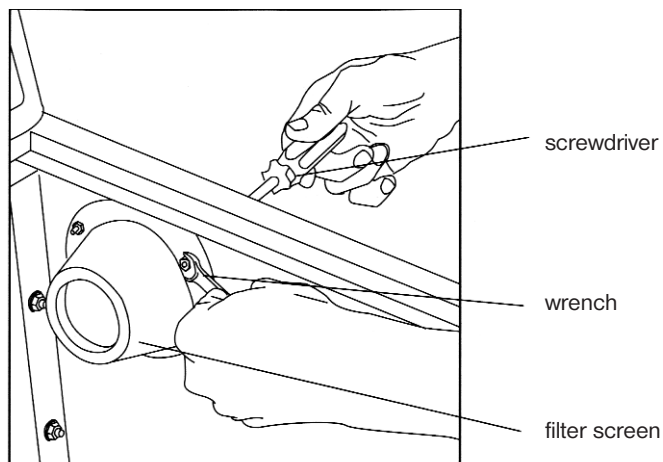
Beware of damaging the thread.



CONNECTION

(For booths equipped with filter)

1. Connect the blower to the right panel of the sandblasting booth.
2. Unscrew the three screws that hold the filter in place (a part of the sandblasting booth).
Use philips screwdriver to unscrew the screws. Use wrench to tighten the nut.
3. Change the filter screen.
4. Mount the blower to the sandblasting booth.
5. Place the three screws into the openings in the sandblasting booth and tighten securely.
Make sure the lever of the air valve is on the upper side for easy access.
6. Place the filter screen back.
7. Mount the filter screen to the blower by using the three screws. To hold the nuts use wrench.



(For booths without filter)

1. If your booth is not equipped with filter screen, you must drill holes to connect the blower.
2. The blower must be connected to the right panel of the sandblasting booth.
3. Use crown drill bit to drill the appropriate hole diameter. Then drill three holes for screws that will hold the blower in place. The diameters are shown on the picture.
4. Mount the blower to the sandblasting booth.
5. Place three screws into the openings in the sandblasting booth and tighten securely. Make sure the lever of the air valve is on the upper side for easy access.
6. Place the filter screen back.
7. Secure the filter in place by tightening the three screws. Hold the nuts using wrench (#8).

