

## WARRANTY CARD

1. KH Trading machines and tools are covered by 6/24 months warranty, starting on the date of purchase, as described in the Civil Code (proof of purchase or invoice receipt must be enclosed with the warranty card when making a claim).
2. This warranty does not cover defects caused by unprofessional handling, machine overloads, not complying with instructions contained in this manual, using accessories that are not approved, unauthorized repair, regular wear and tear and damages occurred during transport. Further, this warranty does not cover parts and accessories such as the motor, carbon brushes, seals and hot-air operated parts and parts that need to be changed regularly.
3. If the repair is to be found as not covered by the warranty policy, all costs including the repair and shipping to and from the repair centre will be paid by the customer, according to valid price list. See www.
4. When making a claim, you must present the warranty card, showing the date of the purchase, the serial number of the machine, vendor stamp and signature of sales clerk, as well as the proof of purchase receipt.
5. Warranty claim shall be made at the vendor shop where you bought your machine or you may mail it to a service centre. The vendor is obligated to fill out the warranty card (date of sale, serial number, vendor stamp and signature). All these information must be filled in at the time of sale.
6. The warranty period will be extended for the period of time for which the machine has been in the service centre possession. If the repair or defect is not covered by the warranty policy, all costs including the repair and shipping will be paid by the owner of the machine / tool. We recommend sending the machine in its original packaging. Please, also enclose brief description of the defect with the packaging.
7. Before sending the machine for repair, clean it thoroughly. If the received machine is dirty, it may be rejected by the service shop or you may be charged a cleaning fee.

### SERVICE

**Logistic centre Klecany**

**Topolová 483**

**250 67 Klecany**

**Czech Republic**

Claim department phone number: 266 190 156

T-mobile: 603 414 975

266 190 111

O2: 601 218 255

Fax:

260 190 100

Vodafone: 608 227 255

<http://www.KHnet.cz>

Email: [servis@KHnet.cz](mailto:servis@KHnet.cz)

Product: <b>EXHAUSTER KH - 1111 PLUS</b>	
Type: <b>KH-1111</b>	Serial number (product series):
Date of manufacture:	Repair centre notes:
Date of sale, stamp, signature:	

**Without the correctly filled warranty card or without proof of purchase receipt, including the product type (invoice, purchase receipt) no warranty claim will be processed.**

**uni-max**

## USER'S MANUAL

# EXHAUSTER KH - 1111 PLUS



# KH-1111

Dear customer. Thank you for purchasing equipment from KH Trading, s.r.o.  
Our company is ready to offer you our services - before, during and after you buy our product.  
If you have any question, comment or idea, please contact our business centre. We will do our best to address your comment or question in timely matter.

**Before first use, please read this manual carefully. It is your responsibility to study all instructions, necessary for safe use and operation and to understand all risks that may be involved during the use of power machines.**

**WARNING! Do not try to use this machine before reading this entire manual and before you know how to handle it. Keep this manual for future reference.**  
**Pay special attention to safety instructions. Not complying with safety rules may cause injury to the operating person or to people standing by or it may cause damage to the machine or to the work piece.**  
**Pay special attention to safety notes and safety labels on the machine.**  
**Never remove or damage them.**

Please, write information such as the invoice number and the number of the sale receipt here in this box.

DESCRIPTION

The smallest of the offered line of exhausters, new with integrated functions of a floor vacuum (a hose is connected to the ventilator on the flange, led to the lower part of the exhauster, where the suction rail is - the exhauster has a handle and mobile wheels).

The exhauster is designed for suctioning dust from all woodworking machines, primarily for joiner operations, where it ensures a clean and dust-free environment without unnecessary ventilation of heat. With regards to construction, it is a mobile exhauster (the length of the suction pipes is up to 3 m). Connection to central vacuuming systems is not expected (this is why detailed characteristics of suction pressure, speed of air ventilation etc. are not elaborated).

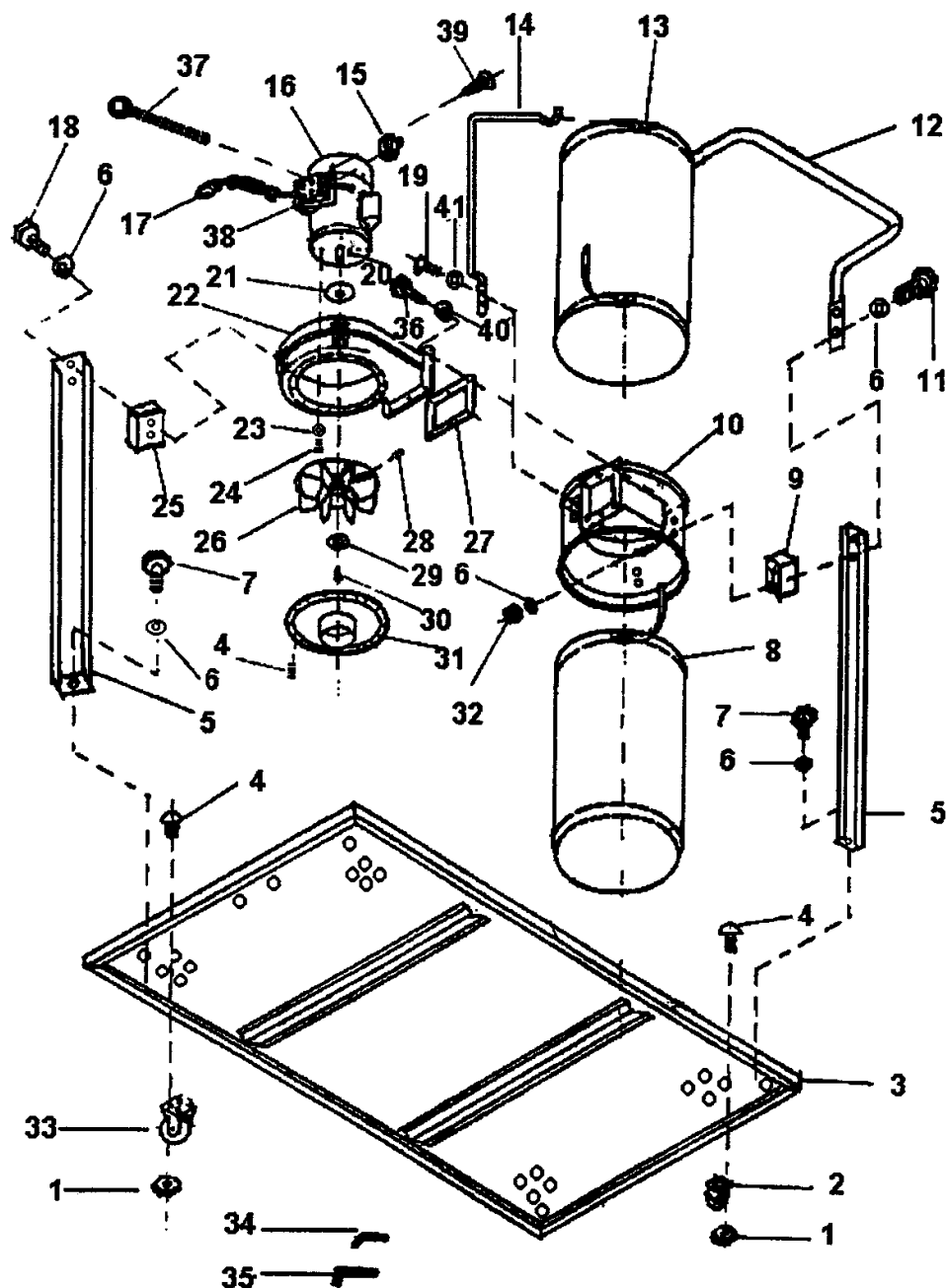
The filtration column is constructed so that the suctioned material is spun along the walls of the filter and in the direction of the lower bag, which is supplied in standard textile, but it can also be exchanged for more suitable material (paper bag) to facilitate waste disposal.

The output is suitable for the suction of smaller machines with sufficient covering, or for use in areas with a lack of space. For professional use, we recommend the more efficient model KH-3121 and primarily KH-6233, which guarantees sufficient output for maintaining a clean worksite.

The exhauster is designed in category St2 for explosive environments - including certificate - in the basic price.

LIST OF PARTS					
Position	Description	Pc	Position	Description	Pc
1	Nut	16	31	Suction	1
2	Mobile wheel	2	32	Nut	4
3	Base	1	33	Mobile wheel	2
4	Screw	28	34	Imbus key	1
5	Support	4	35	Imbus key	1
6	Washer	16	36	Screw	6
7	Screw with 6HR head	4	37	Screw	4
8	Filtration bag	1	38	Switch cover	1
9	Cylinder	2	39	Screw	2
10	Filter box	1	40	Washer	6
11	Screw with 6HR head	4	41	Washer	2
12	Handle	1	42	hose	1
13	Filter	1	43	Clipper	1
14	Filter bracket	1	44	Clipper	1
15	Switch	1	45	Suction nozzle	1
16	Motor	1	46	Screw	2
17	Power cable	1	47	Washer	2
18	Screw with 6HR head	4			
19	Screw with 6HR head	2			
20	Spline	1			
21	Seal	1			
22	Ventilator box	1			
23	Elastic washer	4			
24	Screw with 6HR head	4			
25	Cylinder	2			
26	Ventilator rotor	1			
27	Seal	1			
28	Screw with 6HR head	1			
29	Washer	1			
30	Screw	1			

## DETAILED DRAWING



## TECHNICAL SPECIFICATIONS

Voltage	~230 V/50 Hz
Input	750 W
Current	4.8 A
Rated no-load speed	2,950 min. <sup>-1</sup>
Suction fan rotor diameter	∅ 230 mm
Suction fan wheel material	steel plate
Infeed socket diameter	∅ 100 mm
Filter frame diameter	∅ 370 mm
Filtration area	1.6 m <sup>2</sup>
Volume of waste bags	70 l
Certificate for use to suction explosive dust	category St2
Max. length of suction pipes	up to 3 m
Exhauster dimensions	650 × 420 × 1 550 mm
Packaging dimensions	670 × 420 × 450 mm
Net weight	30 kg
Gross weight	33 kg

The accuracy of instructions, graphs and information contained herein, depends on the printing date. Due to continuous product improvement, the manufacturer reserves the right to change technical parameters of the product, without prior customer notification.

## SAFETY PRECAUTIONS

- **This device may be used by a qualified person, 18 years or older who has been trained in work and environmental safety procedures.**
- **Any person using this equipment must possess a medical certificate demonstrating his eligibility to operate this equipment.**

### Safety symbols and self-adhesive safety stickers:

	Do not use water or foaming fire extinguishers		Caution. Electrical equipment
	Entry prohibited with open fire		Harmful or irritating substances
	Smoking is prohibited		Read manual before use
	Do not use in humid environment		Danger of having fingers cut
	Use respiratory passageways protection		Use protective foot gear
			Use eye protection

**Place the self-adhesive stickers on appropriate and visible spots on your machine.**

## Symbols used in this manual



### Warning!

This symbol informs you about the risk of personal injury or damage to the machine or materials.



### Caution! You are using electrically powered machine!

Risk of injuries by electrical current.



### Warning!

Danger of damage.



### Note:

Additional information.



Use personal safety protection gear.



## General instructions

- Plastic bags and packaging materials pose danger for small children and animals.
- Make sure you know your tool or machine and you are familiar with its operating procedure. Know the hazards if not used correctly.
- If other person will be using this machine make sure that he knows how to safely operate this equipment and that he is familiar with hazards and risk that may occur if not used correctly.
- Always pay special attention to safety instructions on the labels. Do not remove or damage them.
- In case of the labels are damaged or become illegible, contact the supplier.
- Maintain your working area clean. Disorganized and dirty working area may cause accidents.
- Never work in narrow or poorly lit rooms. Make sure the floor is solid and stable and that you can move around easily. Maintain stable posture during work.
- Stay focused and use all your senses. Pay attention to the working procedure. Do not continue to work if you cannot pay full attention.
- Maintain your equipment clean.
- Handles must be kept free of grease and dirt.
- Make sure no children, unauthorized persons or animals have access to your workshop.
- Never put your hands or legs inside the working area.
- Never leave your device unattended during operation.
- Use only for purposes for which it has been designed.
- Use personal protective gear (such as safety goggles, respirator, safe working shoes etc.).
- Do not overreach and know your limits. Use both hands.
- Never work under the influence of alcohol or other drugs.
- Do not use the machine/tool if you feel dizzy or weak.
- Any modifications or improvements to the machine are strictly prohibited. DO NOT USE if you discover a bent part, crack or other damages.
- Never execute maintenance while the device is in use.
- If you see any unusual sign or hear any strange sound, switch off your machine and stop working immediately.
- Before use, make sure all screws are tighten securely.



Detailed description of the use of this device is not included in this manual, because the manufacturer / distributor assumes that the user is experienced in similar type of work. Also according to the applicable law, this device is considered as a commonly sold and used tool. If the user is unfamiliar with the use of this device, we recommend finding out more information about using this device at the Department of work safety.

## DISPOSAL

When the operational life of your device is over, dispose off it in accordance with valid rules and regulations. Your product is made of metal and plastic parts that may be recycled when separated.

1. Disassemble all parts.
2. Separate all parts according to the material they are made of (e.g. metals, rubber, plastics, etc.). Take the separated parts to the recycling facility near you.
3. Electrical waste (used electrical power tools, electric motors, recharging equipment, electronics, accumulators, batteries etc.).

Dear customer. In accordance with the valid regional rules and regulations describing the management of electrical waste, electrical waste is considered dangerous.

Disposal of electrical waste must be therefore handled as dangerous waste in accordance with waste management rules valid in the state you are in.

It is prohibited to mix electrical waste with regular household waste.

You may return your used electrical appliance to a recycling facility near you. More information about electrical and dangerous waste disposal may be obtained from your local authority or from the Internet.

## CAUTION

If the machine breaks down, send it back to the vendor for quick repair.

Please, enclose brief description of the defect. That makes repair easier. If the machine is still covered by warranty, enclose the warranty card and proof of purchase receipt. After the warranty period expires, we repair your machine for a special price.

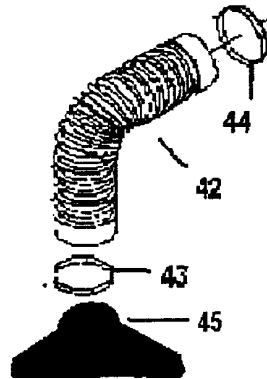
To prevent possible damages during shipping, packed the machine carefully or use the original packaging material. We are not liable for shipping damages due to incorrect packaging of your machine. If making a claim at the shipping company the level and method of packaging plays a major role during claim evaluation process.

**Note:** Pictures and contents in this manual may slightly differ from the actual product or accessories. It is due to continuous improvement of our products. Such small differences have no effect on the product functionality.

### Exhauster assembly

- Connect the suction nozzle with the help of the hose and suction clasps.
- Now you can suction dry waste (dust, wood chips,...) from the floor. Mobility is enabled by mobile wheels.

The hose can be used to connect to the tool.  
Hose length ca 0.75 m. Always secure the hose connection with clasps.



## OPERATION

- Always connect the exhauster to a socket with a functioning protective plug to prevent electric shock.
- Never use an adapter to connect to a power supply!
- Before disconnecting the hose, always make sure the plug is removed from the socket and that the ventilator shaft has come to a full stop.
- Never use the exhauster unless it is fully assembled. The ventilator blades are steel and may cause injury to you fingers and cause particles of suctioned waste to be expelled.
- Turn the exhauster on before the woodworking tool, in order to ensure suction immediately from the onset of work.
- In case of danger of suctioning larger harder particles (gnarls,...), place an appropriate container in front of the exhauster, which can catch these particles. Danger of damaging the ventilator blades.

## MAINTENANCE

- Keep your machine clean. Dirt from tools may enter the inner machine mechanism and cause damages to the machine.
- Do not use aggressive cleaning solution or paint thinners to clean your tool/machine.
- Clean plastic parts with soft cloth dipped in soapy water.
- Clean and treat metal surfaces with a cloth dipped in paraffin oil.
- If you are not using your machine, conserve it with grease and store it in dry place to prevent corrosion.

### Bag cleaning

- Before the onset of work, remove the plug from the socket.
- When cleaning the filtration bags, always use a mask and protective goggles.
- After removing the waste, pull the bag over the edges of the entire circumference and make sure it is thoroughly secured with clasps.
- It is prohibited to use without securing the bag with a clasp. Danger of injury from flying waste.

- Insure the correct maintenance of the machine. Before use make sure the machine is in good working conditions and without any damage.
- Use only original spare parts during repairs.
- Using non-original spare parts or other parts not approved by the manufacturer may cause injury to the operating personnel.
- Do not overload your machine. Measure the work load in such way, so it could be done with comfortable speed.  
Damages due to machine overload are not covered by warranty.
- Do not expose to extremely high temperatures or direct sunlight.
- if you are not using your machine, store it in a dry and safe place, out of reach of children.
- Before use make sure that all safety elements work correctly and efficiently.  
Make sure all moving parts are in good working conditions.
- Before use make sure that no part is cracked or stuck, Make sure all parts are attached and assembled as designed. Beware of all other conditions that may have a negative effect on the proper functioning of your equipment.
- If not stated otherwise in this manual, all damaged parts must be repaired or changed.



### Assembly

- Do not use the machine unless completely assembled.



### Electrical equipment

- It is only possible to connect it to a socket with a functioning protective plug.
- Observe all basic safety rules when using electrical equipment to prevent risk of fire, injuries by electrical shock and other hazards. Before using the tool, read this manual entirely and follow all safety instructions.
- Make sure the power cable plug is plugged into the correct wall outlet. The voltage in the wall outlet must be the same as shown on the specification label to prevent damage to the electric motor. Too low voltage will not provide your tool with enough power.
- Before connecting the power supply cable make sure that the main switch is in the Off position. When you finished your work, disconnect the power plug from the wall outlet and switch off the main switch.
- Never relocate electric tools by pulling them by the cable. o When disconnecting the plug from the wall outlet, never pull the cable by its cord.
- Protect the power cable from high temperatures, oils, paint thinners and make sure that the cable is not hanging over sharp edges.
- Inspect the power cable regularly. If damaged have it replaced by qualified technician.
- In case of need, always use high quality extension cords with a grounded conductor, corresponding to the output, completely unwound. Inspect extension cables regularly. Damaged cables must be repair immediately.
- Before performing any maintenance, repair or adjustment, switch off the main switch and disconnect the power cable from the wall outlet.
- Make sure no one may switch you tool incidentally on. Do not keep your fingers close to the main switch, unless absolutely necessary.
- Do not use in environments where explosives are stored or used (paint shops, warehouse with flammables etc.).
- Do not use in humid environments or if wet.
- Do not expose to rain.



## Exhauster

- Always use safety goggles with side protection while working. Dioptics do not fulfil this requirement.
- Use a mask. The dust from some wood may have carcinogenic effects.
- Wear slip resistant footwear while working.
- Do not allow the hose to come in close contact with sensitive body parts (eyes, ears, mouth).
- Do not use to suction oil, water and coarse waste (pieces of wood, metal items, large gnarls, steel clasps). Could cause damage to the fan blade and filtration bag.
- Do not turn the exhauster on unless the suction hose is connected.
- The tool is not designed to suction flammable or explosive materials and material that pose a threat to health.
- Do not suction flammable dust (dust from coals, dust from cutting metal, plastics,...), toxic material, hot items,...
- Do not use in an environment with flammable vapours and gases.
- The tool must not be used to suction water from tanks, pipes, WC, etc.
- The tool must not be cleaned by submerging under water or by washing with pressurised water.
- Do not use a power source cable for relocating the exhauster to another work site.
- If you should discover that the power source cable is overheated during use, turn the exhauster off, remove the power source cable from the socket and make sure it is checked or replaced by an authorised person.
- Never step on the exhauster!

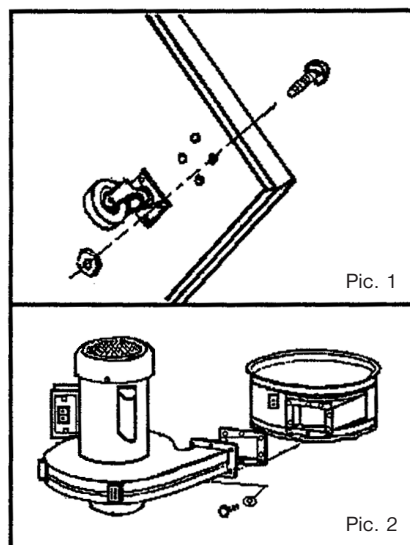
## ASSEMBLY

- Before throwing the packaging material out, make sure no part is left inside. If so, take it out and install it. Use the part listing for check-up and the installation drawing for guidance.

**Before assembly, make sure the plug is removed from the socket.**

### Suction assembly

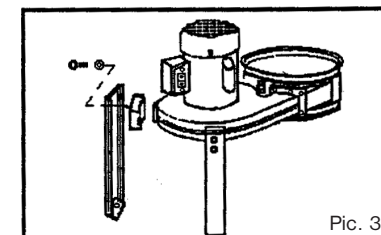
- Lift the base and with a screw and washer, attach the mobile wheels. o All screws must be tightened securely.
- Connect the outfeed socket of the ventilator box to the filter box. Do not forget to add sealing to the joint. Tighten 6 screws and washers thoroughly.



Pic. 1

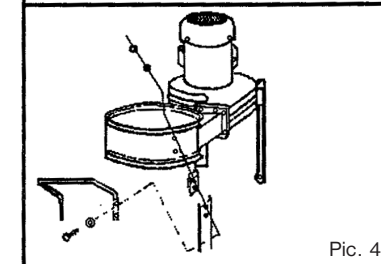
Pic. 2

- Screw on 2 supports to the ventilator box.



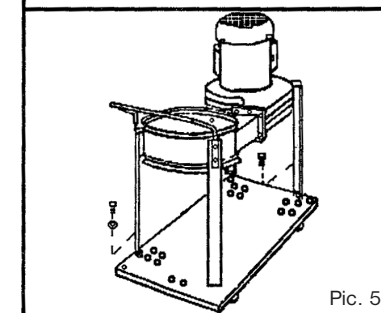
Pic. 3

- Screw on another 2 supports and handle to the ventilator box.



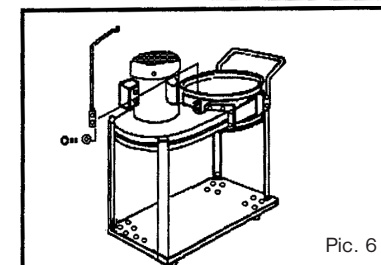
Pic. 4

- Screw the box with supports on to the base.



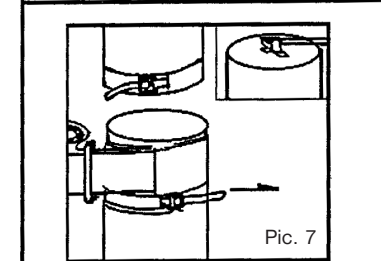
Pic. 5

- Screw the filter bracket on.



Pic. 6

- Attach the upper filter to the filter bracket and pull over the end of the filter. Secure with a clasp.
- It is prohibited to use without securing the bag with a clasp.  
Danger of injury from flying waste.
- Attach the lower filter in the same manner.
- Check to see that all joints are tightened thoroughly.



Pic. 7